

İZMİR

12.000 M² OF GARDENS, 5 500 M²
OF SPA, AND ONE MUSEUM
WORTHY ART COLLECTION
FEATURING MOSAICS,
SCULPTURES, AND PAINTINGS

Swissôtel Büyük Efes, İzmir
Gaziosmanpaşa Bulvarı No: 1, 35210 Alsancak, İzmir, Turkey
Tel: +90 (232) 414 00 00
Faks: +90 (232) 414 10 10
izmir@swissotel.com www.swissotel.com/izmir

swissôtel **BÜYÜK EFES**
İZMİR

LOCATION

TAKE IN THE STUNNING VISTA

Welcome to a view that will literally take your breath away. Nestled in 12,000 square metres of landscaped gardens overlooking the spectacular Kordon on the Aegean Sea, Swissôtel Büyük Efes is a location you won't forget in a hurry. If you can tear yourself away from the view long enough you will find that our address is right in the heart of İzmir's commercial district, mere steps away from the heart of the city and its main attractions. Art lovers are in their element here. Our permanent art collection encompasses more than 800 exhibits which can be found in the lobby, rooms, restaurants, bars, garden and spa.



GUEST ROOMS

EASE INTO ELEGANT COMFORT

When choosing one of our 402 guest rooms and suites, the hardest part is deciding whether to overlook the gardens or the sea. Designed with your comfort in mind, the stylish spaces feature works by international and Turkish modern artists such as Rabaroma, Fernando Botero, Seçkin Pirim and Bedri Rahmi Eyüboğlu not to mention state-of-the-art technology and exclusive amenities. Are you travelling for business? Stay in one of our Executive rooms and suites and enjoy access to the Swiss Executive Club Lounge.

RESTAURANTS & BARS

EXPLORE EXQUISITE GASTRONOMIC EXPERIENCES

You are invited to discover special flavors. The restaurants and bars at Swissôtel Büyük Efes offer refined tastes at international standards, catering to a variety of palates. At Café Swiss, guests can enjoy carefully prepared seasonal dishes from European and Turkish cuisines, while Lobby Lounge provides a pleasant setting to take a short break from the day with tea or coffee accompanying enjoyable conversations. For homemade chocolates and pastries, Swiss Gourmet awaits you. For evening gatherings and elegant cocktails, Scappi, featured in the Michelin Recommended List, transforms the traditional flavors of Italian cuisine into distinctive experiences with impressive presentations and carefully crafted menus. Private areas and separate dining rooms are available for group dining, accommodating up to 40 guests at Scappi and 60 guests at Café Swiss.



PÜROVEL SPA & SPORT

5.500 m² OF ALPINE WELLNESS

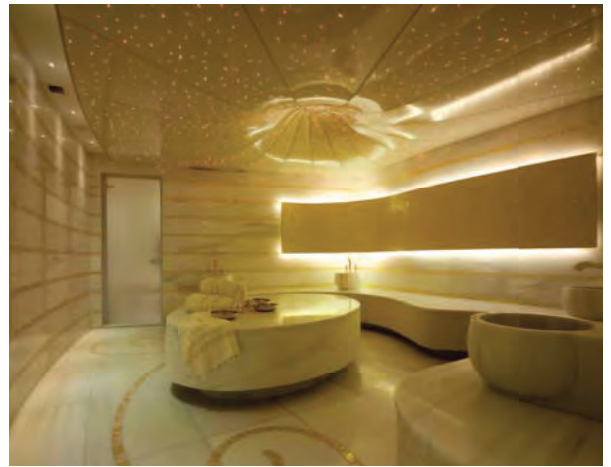
Make the most of our beautiful surroundings. Pürovel Spa & Sport, spanning 5,500 square meters, offers Alpine-inspired wellness experiences within a stylish and contemporary setting. Relax and unwind with a comprehensive range of facilities, including 14 treatment rooms, a Presidential Wellness Suite for couples, solarium, relaxation lounge, Turkish hammam, steam bath, sauna, jacuzzi, and indoor and outdoor swimming pools. In-house pilates studios, group fitness classes, and personal training services help you maintain an active and balanced lifestyle throughout your stay.



FACILITIES & SERVICES HIGHLIGHTS

HIGHLIGHTS

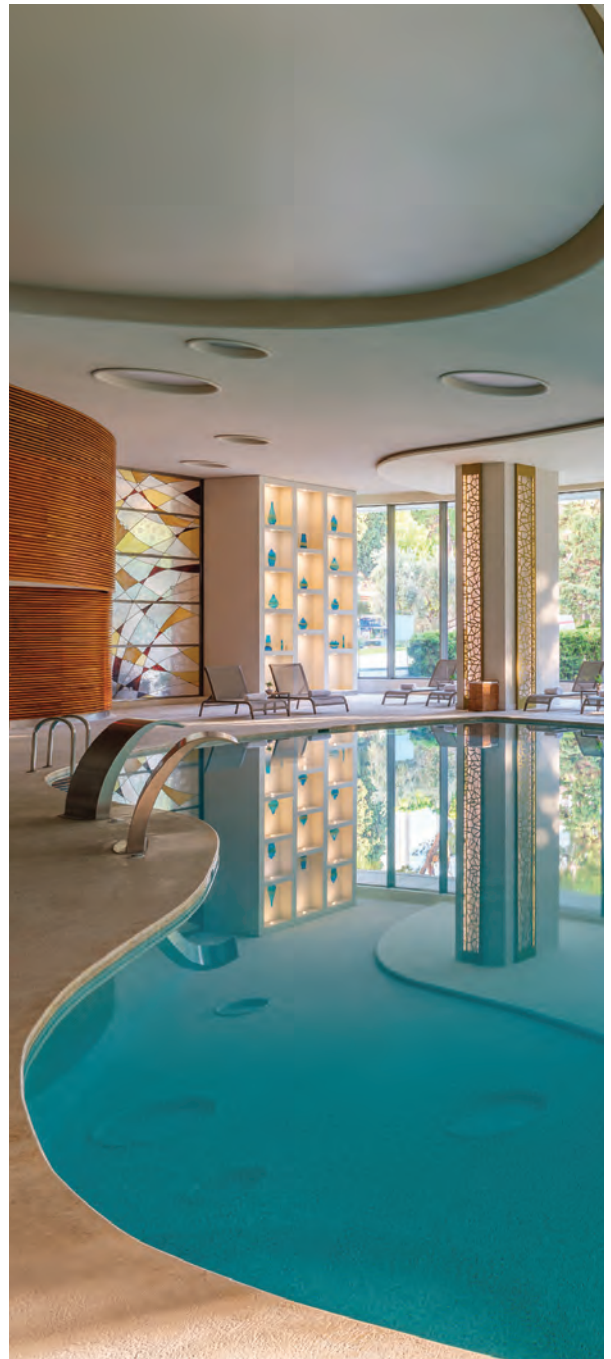
- Centrally-located 5-star hotel
- 402 beautiful and contemporary guest rooms and suites
- 30 minute drive from Adnan Menderes Airport (15 km away)
- Easy access to holiday destinations such as Urla, Çeşme, Foça, Kuşadası, and historical locations like the ancient cities of Ephesus and Pergamon
- In-house restaurants and bar
- Executive Lounge Club
- Professional conference, meeting and event facilities spanning a total of 7.318 m²
- Business centre, wireless internet
- Pürovel Spa & Sport spanning 5.500 m²
- 24-hour in room dining
- Underground car park with 260 lots
- Valet parking
- Laundry service
- Car / Limousine rental and service
- Concierge service



MEETING, EVENTS & CONFERENCES

LET US TAKE CARE OF THE DETAILS

We have plenty of space, 7,316 square metres to be precise. Our 19 meeting and conference rooms can accommodate up to 2,000 guests and are suitable for a wide array of formats and functions, be it a board meeting, conference, product launch or wedding. If you are looking to hold an event on more of a grand scale then our multi-purpose exhibition hall and a grand ballroom are ideal.



CAPACITY CHART

MEETING ROOMS	AREA FT²	AREA M²	L	W	H	THEATRE STYLE	BOARD ROOM	CLASS ROOM	U-SHAPE	SEATING	COCKTAIL	COCKTAIL PROLONGE
---------------	-------------	------------	---	---	---	------------------	---------------	---------------	---------	---------	----------	----------------------

LEGEND

BASEMENT

Kordon 1 Exhibition Centre	11,506	1069	34	35	2.6	-	60	-	-	420	850	750
Kordon 2 Exhibition Centre	4176	388	17	20	2.6	-	32	-	-	180	350	250
Kordon 1 + 2	15,682	1457	-	-	-	-	-	-	-	-	1200	1000

GROUND LEVEL

Convention Centre Lobby	6996	650	34	16	2.4/5.9	-	-	-	-	-	-	-
-------------------------	------	-----	----	----	---------	---	---	---	---	---	---	---

LEVEL 1

Grand Efes 1	9579	890	30	32	4.4	750	60	300	80	600	750	650
Grand Efes 2	3982	370	22.7	12.8	3.9	250	60	100	50	216	250	200
Grand Efes Foyer	2529	235	29	7	2.3	-	-	-	-	-	150	100
Grand Efes 1 + 2 + Foyer	16,092	1495	51.8	30	-	-	-	-	-	816	1150	950
Foyer	4843	450	-	-	-	-	-	-	-	-	-	-
Elevator Foyer Level 2	3552	330	12.9	21.2	2.3	-	-	-	-	-	200	150

LEVEL 3

Alsancak	775	72	5.7	9.8	5.7	-	9	-	-	-	-	-
Karsiyaka 1	818	76	11.5	5.5	2.32	72	32	30	29	30	60	40
Karsiyaka 2	871	78	11.6	5.5	2.32	72	32	30	29	30	60	40
Karsiyaka 3	785	73	11.6	5.4	2.32	72	32	30	29	30	60	40
Karsiyaka 1 + 2 + 3	2474	227	-	-	-	-	-	-	-	90	170	120
Konak 1	581	54	6.7	6.1	2.65	24	12	12	12	16	20	15
Konak 2	559	52	6.8	6.1	2.65	24	12	12	12	16	20	15
Konak 1 + 2	1140	106	-	-	-	48	24	24	24	32	40	30
Bergama 1	452	42	6	6.1	2.65	30	16	16	12	16	15	10
Bergama 2	419	39	5.3	6	2.65	30	10	-	10	16	15	10
Bergama 3	387	36	5.9	5.8	2.65	25	10	-	10	16	15	10
Bergama 2 + 3	806	75	11	5	-	40	20	24	16	32	30	20
Didim	1625	151	13.1	12.3	2.6	120	38	76	32	90	120	100
Total Meeting Room	7272	673	-	-	-	454	202	212	171	260	385	280
Petek Boardroom	968	90	13	6	2.6	-	25	-	-	-	-	-
Bayraklı Boardroom	667	62	9	5	2.6	-	16	-	-	-	-	-
Çankaya Boardroom	398	37	6	5	2.6	-	7	-	-	-	-	-
Total Meeting & Boardrooms	2033	189	-	-	-	1454	465	612	301	1676	2735	2230
Elevator Foyer Level 3	4843	450	21.6	25.4	2.4	-	-	-	-	-	300	250
Pantry/Café Meeting Level 3	968	110	9.5	13.7	3.25	-	-	-	-	-	70	50
Alsancak Foyer Level 3	592	55	9.6	30.9	2.4	-	-	-	-	-	45	30
Elevator Foyer Level 4	3982	370	19.5	21.5	2.4	-	-	-	-	-	250	200

LEVEL 5

Smyrna 1	5704	530	20.4	20.7	6.3	560	40	220	60	320	450	350
Smyrna 2	2260	210	15.7	13.6	6.3	140	60	80	40	120	160	120
Smyrna 1 + 2	7964	740	-	-	6.5	700	100	400	100	456	610	470
Elevator Foyer Level 5	3982	370	21.5	17.7	2.4	-	-	-	-	-	250	200
Smyrna Foyer	3304	307	40.7	10.3	2.4	-	-	-	-	-	200	150
Total Convention Superficy	82,105	7,646	-	-	-	-	-	-	-	-	-	-

GARDENS

Palm Garden Grass Area	-	1000	-	-	-	-	-	-	-	350	500	450
Palm Garden Stone Floor Area	-	750	-	-	-	-	-	-	-	650	900	850
Palm Garden Total	-	1750	-	-	-	-	-	-	-	1000	1400	1300
Oval Garden	-	708	-	-	-	-	-	-	-	380	600	450
Secret Garden with Palm	-	743	-	-	-	-	-	-	-	250	500	450

Meeting Room or Ballroom

Restrooms

Escalator

Elevator

Car Park

Food & Beverage Outlet

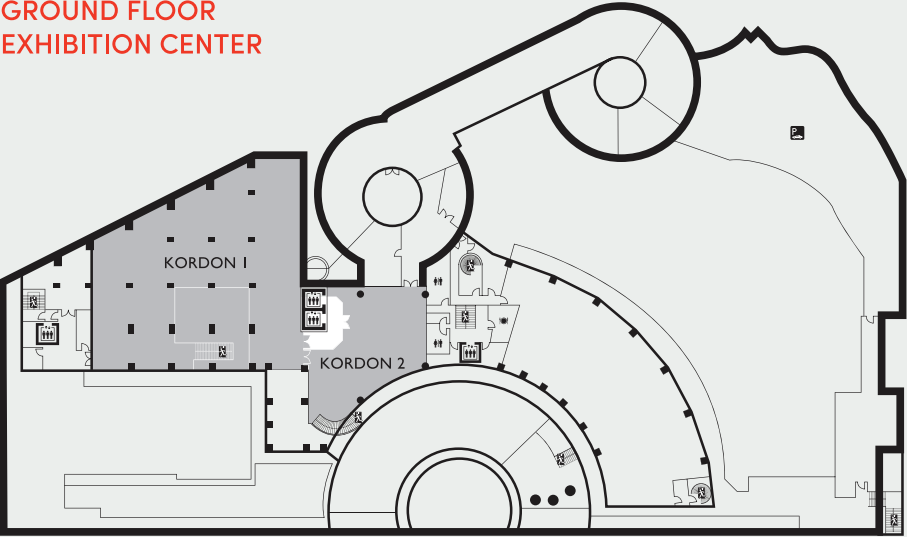
Emergency Exit

Stairway

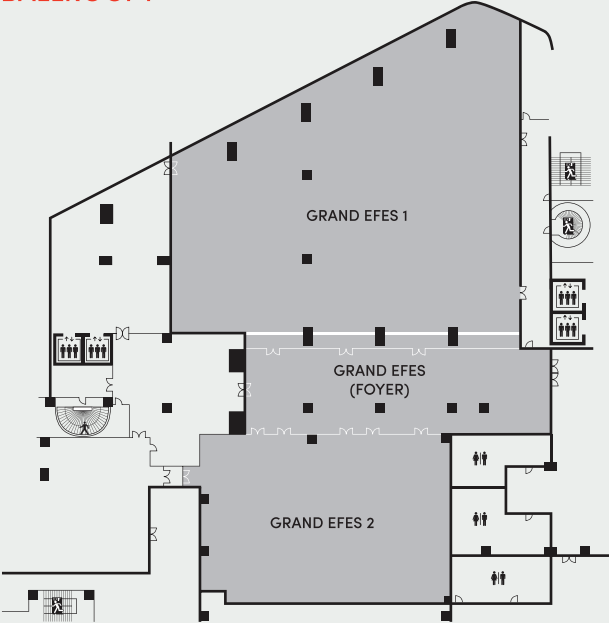
Window

Moveable Partition

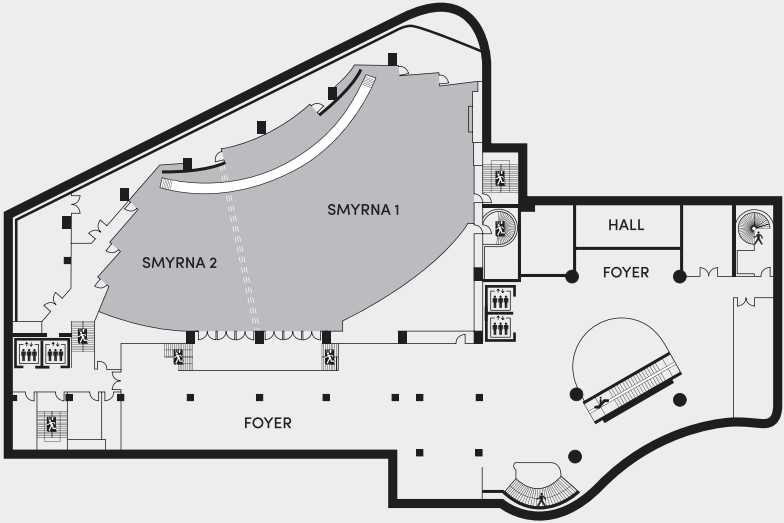
GROUND FLOOR
EXHIBITION CENTER



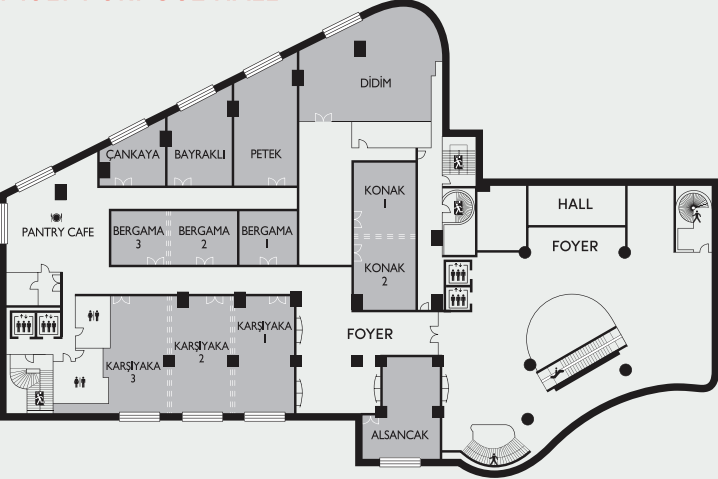
1ST FLOOR
BALLROOM



5TH FLOOR
MULTIPURPOSE HALL



3RD FLOOR
MULTIPURPOSE HALL



CONVENTION CENTER
LOBBY

