

İZMİR

12.000 M² OF GARDENS, 5.500 M²
OF SPA, AND ONE MUSEUM
WORTHY ART COLLECTION
FEATURING MOSAICS,
SCULPTURES, AND PAINTINGS

Swissôtel Büyük Efes, İzmir
Gaziosmanpaşa Bulvarı No: 1, 35210 Alsancak, İzmir, Turkey
Tel: +90 (232) 414 00 00
Faks: +90 (232) 414 10 10
izmir@swissotel.com www.swissotel.com/izmir

swissôtel **BÜYÜK EFES**
İZMİR

LOCATION

TAKE IN THE STUNNING VISTA

Welcome to a view that will literally take your breath away. Nestled in 12.000 square metres of landscaped gardens overlooking the spectacular Kordon on the Aegean Sea, Swissôtel Büyük Efes is a location you won't forget in a hurry. If you can tear yourself away from the view long enough you will find that our address is right in the heart of İzmir's commercial district, mere steps away from the heart of the city and its main attractions. Art lovers are in their element here. Our permanent art collection encompasses more than 800 exhibits which can be found in the lobby, rooms, restaurants, bars, garden and spa.



GUEST ROOMS

EASE INTO ELEGANT COMFORT

When choosing one of our 402 guest rooms and suites, the hardest part is deciding whether to overlook the gardens or the sea. Designed with your comfort in mind, the stylish spaces feature works by international and Turkish modern artists such as Rabaroma, Fernando Botero, Seçkin Pirim and Bedri Rahmi Eyüboğlu not to mention state-of-the-art technology and exclusive amenities. Are you travelling for business? Stay in one of our Executive rooms and suites and enjoy access to the Swiss Executive Club Lounge.

RESTAURANTS & BARS

EXPLORE EXQUISITE GASTRONOMIC EXPERIENCES

Feeling hungry? Our three in-house restaurants and bars offer mouth-watering cuisine to suit all tastes and appetites. At Café Swiss, our chefs present the finest examples of Turkish and European cuisines. You can enjoy live music, carefully prepared mezes, and grilled specialties at Aquarium Mezzes & Grill or visit Swiss Gourmet for homemade chocolates and cakes. Located on the 9th floor with its unique bay view, Scappi Restaurant at Swissôtel Büyük Efes transforms the authentic flavors of the Mediterranean and Italian cuisines into exclusive experiences, hosting delightful melodies and delicious cocktails prepared with impressive presentations.



PÜROVEL SPA & SPORT

5.500 M² OF ALPINE WELLNESS

Make the most of our beautiful surroundings. The 5.500 square meter Pürovel Spa & Sport provides the Alpine inspired solution to healthy living within a stylish and contemporary environment. Relax and enjoy our full range of treatments with 14 treatment rooms, Presidential Wellness Suite for couples, solarium, relaxation lounge, Turkish Hammam, steam bath, sauna and Jacuzzi, indoor & outdoor swimming pools. White the in-house pilates studios, group fitness classes, personal training and a tennis court will help you stay fit during your travels.



MEETING, EVENTS & CONFERENCES

LET US TAKE CARE OF THE DETAILS

We have plenty of space, 7.316 square metres to be precise. Our 19 meeting and conference rooms can accommodate up to 2.000 guests and are suitable for a wide array of formats and functions, be it a board meeting, conference, product launch or wedding. If you are looking to hold an event on more of a grand scale then our multi-purpose exhibition hall and a grand ballroom are ideal.



FACILITIES & SERVICES HIGHLIGHTS

HIGHLIGHTS

- Centrally-located 5-star hotel
- 402 beautiful and contemporary guest rooms and suites
- 30 minute drive from Adnan Menderes Airport (15 km away)
- Easy access to holiday destinations such as Urla, Çeşme, Foça, Kuşadası, and historical locations like the ancient cities of Ephesus and Pergamon
- In-house restaurants and bar
- Executive Club facilities (For Executive floor rooms and above)
- Professional conference, meeting and event facilities spanning a total of 7.316 m²
- Business centre, wireless internet
- Pürovel Spa & Sport spanning 5.500 m²
- 24-hour in room dining
- Underground car park with 250 lots
- Valet parking
- Laundry service
- Car / Limousine rental and service
- Shopping Arcade / Retail



CAPACITY CHART

| MEETING ROOMS | AREA FT² | AREA M² | L | W | H | THEATRE STYLE | BOARD ROOM | CLASS ROOM | U-SHAPE | SEATING | COCKTAIL | COCKTAIL PROLONGE |
|---------------|-------------|------------|---|---|---|------------------|---------------|---------------|---------|---------|----------|----------------------|
|---------------|-------------|------------|---|---|---|------------------|---------------|---------------|---------|---------|----------|----------------------|

BASEMENT

| | | | | | | | | | | | | |
|----------------------------|--------|------|----|----|-----|---|----|---|---|-----|------|------|
| Kordon 1 Exhibition Centre | 11,506 | 1069 | 34 | 35 | 2.6 | - | 60 | - | - | 420 | 850 | 750 |
| Kordon 2 Exhibition Centre | 4176 | 388 | 17 | 20 | 2.6 | - | 32 | - | - | 180 | 350 | 250 |
| Kordon 1 + 2 | 15,682 | 1457 | - | - | - | - | - | - | - | - | 1200 | 1000 |

GROUND LEVEL

| | | | | | | | | | | | | |
|-------------------------|------|-----|----|----|---------|---|---|---|---|---|---|---|
| Convention Centre Lobby | 6996 | 650 | 34 | 16 | 2.4/5.9 | - | - | - | - | - | - | - |
|-------------------------|------|-----|----|----|---------|---|---|---|---|---|---|---|

LEVEL 1

| | | | | | | | | | | | | |
|--------------------------|--------|------|------|------|-----|-----|----|-----|----|-----|------|-----|
| Grand Efes 1 | 9579 | 890 | 30 | 32 | 4.4 | 750 | 60 | 300 | 80 | 600 | 750 | 650 |
| Grand Efes 2 | 3982 | 370 | 22.7 | 12.8 | 3.9 | 250 | 60 | 100 | 50 | 216 | 250 | 200 |
| Grand Efes Foyer | 2529 | 235 | 29 | 7 | 2.3 | - | - | - | - | - | 150 | 100 |
| Grand Efes 1 + 2 + Foyer | 16,092 | 1495 | 51.8 | 30 | - | - | - | - | - | 816 | 1150 | 950 |
| Foyer | 4843 | 450 | - | - | - | - | - | - | - | - | - | - |
| Elevator Foyer Level 2 | 3552 | 330 | 12.9 | 21.2 | 2.3 | - | - | - | - | - | 200 | 150 |

LEVEL 3

| | | | | | | | | | | | | |
|-----------------------------|------|-----|------|------|------|------|-----|-----|-----|------|------|------|
| Alsancak | 775 | 72 | 5.7 | 9.8 | 5.7 | - | 9 | - | - | - | - | - |
| Karsiyaka 1 | 818 | 76 | 11.5 | 5.5 | 2.32 | 72 | 32 | 30 | 29 | 30 | 60 | 40 |
| Karsiyaka 2 | 871 | 78 | 11.6 | 5.5 | 2.32 | 72 | 32 | 30 | 29 | 30 | 60 | 40 |
| Karsiyaka 3 | 785 | 73 | 11.6 | 5.4 | 2.32 | 72 | 32 | 30 | 29 | 30 | 60 | 40 |
| Karsiyaka 1 + 2 + 3 | 2474 | 227 | - | - | - | - | - | - | - | 90 | 170 | 120 |
| Konak 1 | 581 | 54 | 6.7 | 6.1 | 2.65 | 24 | 12 | 12 | 12 | 16 | 20 | 15 |
| Konak 2 | 559 | 52 | 6.8 | 6.1 | 2.65 | 24 | 12 | 12 | 12 | 16 | 20 | 15 |
| Konak 1 + 2 | 1140 | 106 | - | - | - | 48 | 24 | 24 | 24 | 32 | 40 | 30 |
| Bergama 1 | 452 | 42 | 6 | 6.1 | 2.65 | 30 | 16 | 16 | 12 | 16 | 15 | 10 |
| Bergama 2 | 419 | 39 | 5.3 | 6 | 2.65 | 30 | 10 | - | 10 | 16 | 15 | 10 |
| Bergama 3 | 387 | 36 | 5.9 | 5.8 | 2.65 | 25 | 10 | - | 10 | 16 | 15 | 10 |
| Bergama 2 + 3 | 806 | 75 | 11 | 5 | - | 40 | 20 | 24 | 16 | 32 | 30 | 20 |
| Didim | 1625 | 151 | 13.1 | 12.3 | 2.6 | 120 | 38 | 76 | 32 | 90 | 120 | 100 |
| Total Meeting Room | 7272 | 673 | - | - | - | 454 | 202 | 212 | 171 | 260 | 385 | 280 |
| Petek Boardroom | 968 | 90 | 13 | 6 | 2.6 | - | 25 | - | - | - | - | - |
| Bayraklı Boardroom | 667 | 62 | 9 | 5 | 2.6 | - | 16 | - | - | - | - | - |
| Çankaya Boardroom | 398 | 37 | 6 | 5 | 2.6 | - | 7 | - | - | - | - | - |
| Total Meeting & Boardrooms | 2033 | 189 | - | - | - | 1454 | 465 | 612 | 301 | 1676 | 2735 | 2230 |
| Elevator Foyer Level 3 | 4843 | 450 | 21.6 | 25.4 | 2.4 | - | - | - | - | - | 300 | 250 |
| Pantry/Café Meeting Level 3 | 968 | 110 | 9.5 | 13.7 | 3.25 | - | - | - | - | - | 70 | 50 |
| Alsancak Foyer Level 3 | 592 | 55 | 9.6 | 30.9 | 2.4 | - | - | - | - | - | 45 | 30 |
| Elevator Foyer Level 4 | 3982 | 370 | 19.5 | 21.5 | 2.4 | - | - | - | - | - | 250 | 200 |

LEVEL 5

| | | | | | | | | | | | | |
|----------------------------|--------|-------|------|------|-----|-----|-----|-----|-----|-----|-----|-----|
| Smyrna 1 | 5704 | 530 | 20.4 | 20.7 | 6.3 | 560 | 40 | 220 | 60 | 320 | 450 | 350 |
| Smyrna 2 | 2260 | 210 | 15.7 | 13.6 | 6.3 | 140 | 60 | 80 | 40 | 120 | 160 | 120 |
| Smyrna 1 + 2 | 7964 | 740 | - | - | 6.5 | 700 | 100 | 400 | 100 | 456 | 610 | 470 |
| Elevator Foyer Level 5 | 3982 | 370 | 21.5 | 17.7 | 2.4 | - | - | - | - | - | 250 | 200 |
| Smyrna Foyer | 3304 | 307 | 40.7 | 10.3 | 2.4 | - | - | - | - | - | 200 | 150 |
| Total Convention Superficy | 82,105 | 7,646 | - | - | - | - | - | - | - | - | - | - |

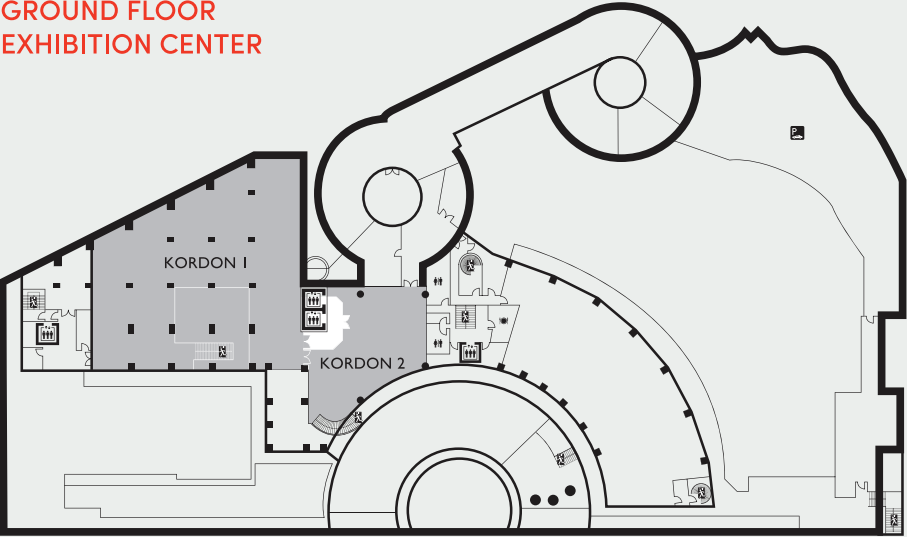
GARDENS

| | | | | | | | | | | | | |
|------------------------------|---|------|---|---|---|---|---|---|---|------|------|------|
| Palm Garden Grass Area | - | 1000 | - | - | - | - | - | - | - | 350 | 500 | 450 |
| Palm Garden Stone Floor Area | - | 750 | - | - | - | - | - | - | - | 650 | 900 | 850 |
| Palm Garden Total | - | 1750 | - | - | - | - | - | - | - | 1000 | 1400 | 1300 |
| Oval Garden | - | 708 | - | - | - | - | - | - | - | 380 | 600 | 450 |
| Secret Garden with Palm | - | 743 | - | - | - | - | - | - | - | 250 | 500 | 450 |

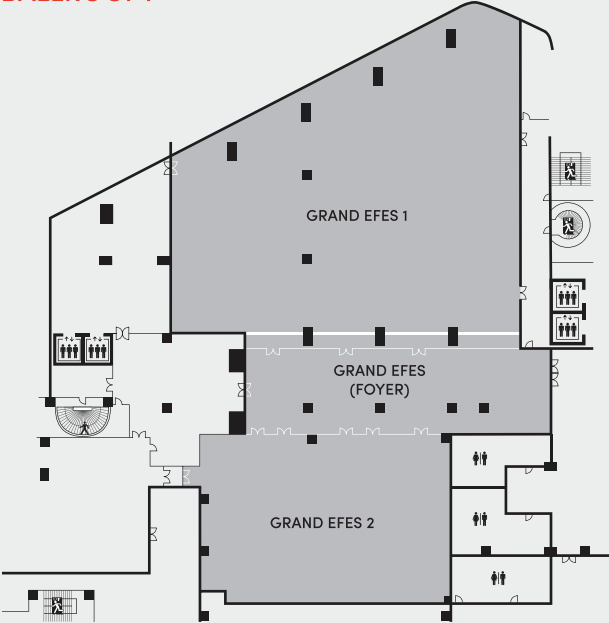
LEGEND

- Meeting Room or Ballroom
- Restrooms
- Escalator
- Elevator
- Car Park
- Food & Beverage Outlet
- Emergency Exit
- Stairway
- Window
- Moveable Partition

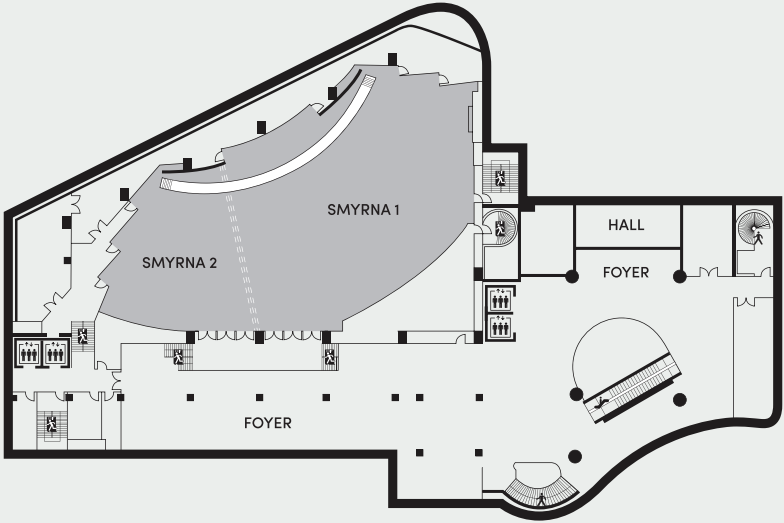
GROUND FLOOR
EXHIBITION CENTER



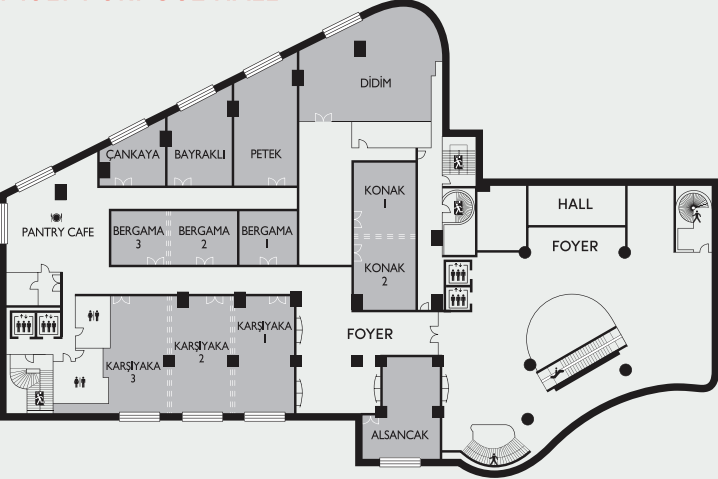
1ST FLOOR
BALLROOM



5TH FLOOR
MULTIPURPOSE HALL



3RD FLOOR
MULTIPURPOSE HALL



CONVENTION CENTER
LOBBY

